

SCIENCE GALLERY

VENUE HIRE + EVENTS

SCIENCE GALLERY



We pay our deepest respects to Elders past and present of the Wurundjeri peoples of the Kulin Nation.

We extend that respect to all First Nations peoples, celebrated as the first artists and scientists, and acknowledge their continuous care and connection to these lands, skies and water ways.

Installation view of 'Ngapulara Ngarngarnyi Wirra (Our Family Tree)' by Adam Goodes, Angie Abdilla, Baden Pailthorpe in Science Gallery Melbourne's SWARM (Photography: Alan Weedon, 2022)

WELCOME TO SCIENCE GALLERY MELBOURNE, WHERE SCIENCE AND ART INTERSECT

The first and only Australian node in the internationally acclaimed Science Gallery Network, Science Gallery Melbourne is a contemporary, playful and welcoming space to explore issues, ideas and the great challenges of our time.

We aim to show that anything is possible when science and art come together.

We welcome you, and your guests, to experience Science Gallery as the home for your next event.

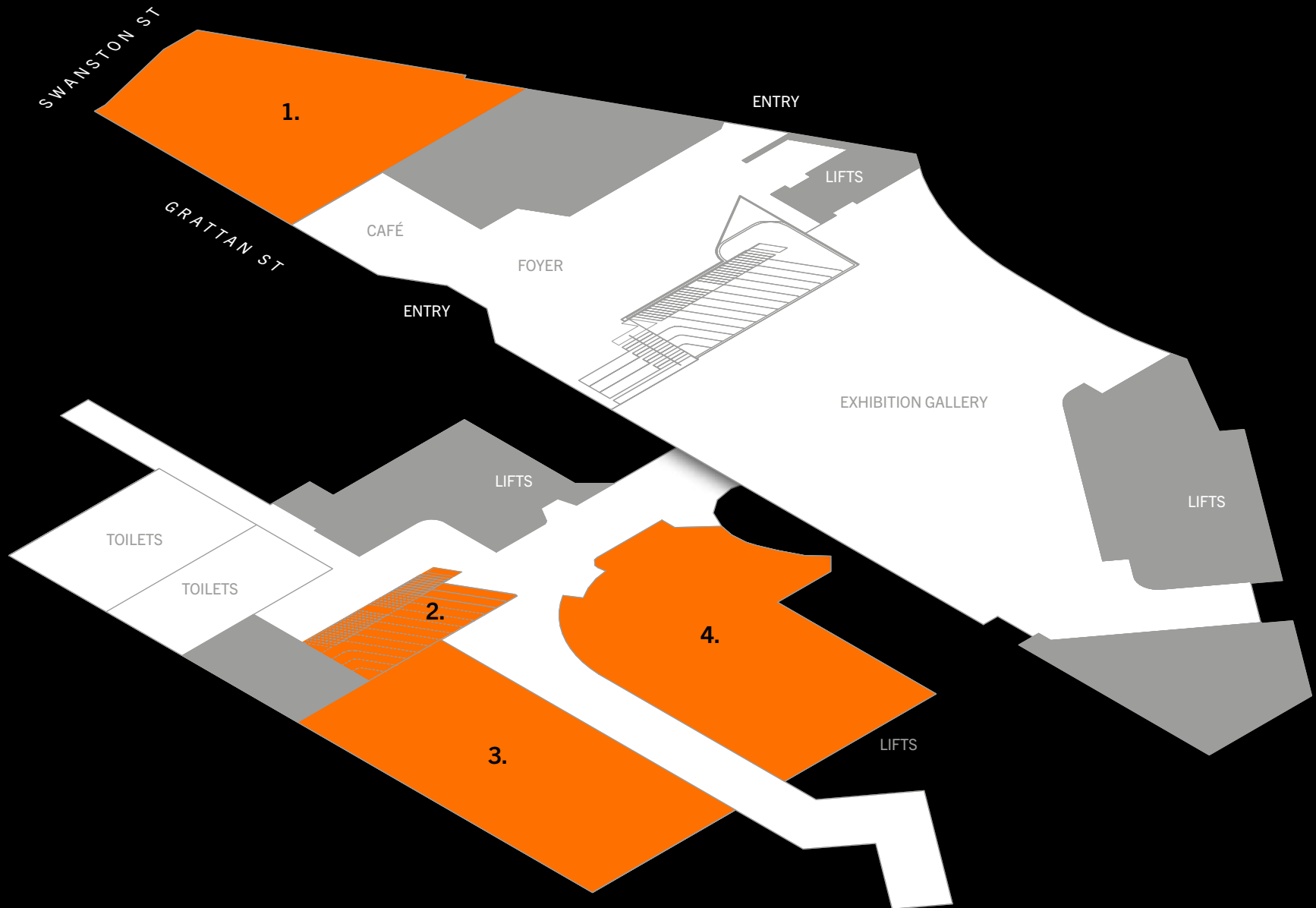
Installation view of 'Synthetic Pollenizer' by Michael Candy in Science Gallery Melbourne's SWARM (Photography: Alan Weedon, 2022)

SPACES FOR HIRE

Spanning two floors Science Gallery Melbourne offers a variety of spaces for private hire.

GROUND FLOOR

1. WESTERN GALLERY



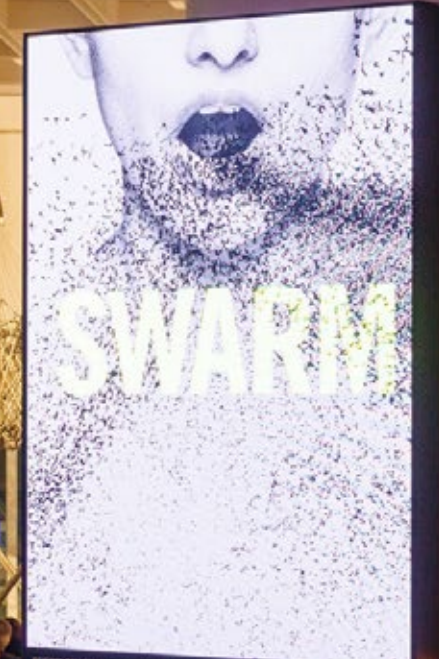


SWARM

PART OF THE JACK?
13.8.22 - 3.2.22 FREE ENTRY

RESEARCHER'S INSPIRATIONS

CONTRIBUTING



SWARM

SCIENCE GALLERY MELBOURNE PARTNERS



The Ground Floor Galleries can host large guest numbers for stand up cocktail events

Science Gallery Melbourne Events and Venue Hire

CAPACITY OF SPACES

FLOOR	SPACE	COCKTAIL	DINING	THEATRE STYLE	WORKSHOP
GROUND FLOOR	WESTERN GALLERY	200	50	—	—
BASEMENT	PACCAR THEATRE	—	—	80	—
	SCIENCE GALLERY THEATRE	200	130	180	—
	STEM CENTRE OF EXCELLENCE	—	—	—	64
WHOLE VENUE		1000	—	—	—

WESTERN GALLERY

Located on the Ground Floor, with floor to ceiling windows overlooking Swanston Street, the Western Gallery is a light-filled gallery space branching out from the entrance foyer. During gallery opening hours, the space is ideal for a private morning tea, lunch, or afternoon tea, where guests can experience the buzz of a public gallery. By night, the space transforms into a stunning setting for a stand-up cocktail event, or a striking long table or banquet-style dinner. The Western Gallery is an exhibition space, and capacities will fluctuate depending on installations at any given time.

CAPACITY

Cocktail: 200

Dining: TBA*

Seated Presentation: TBA*

*Capacities vary based on the exhibition.
Speak to M&C Events Team for current information.

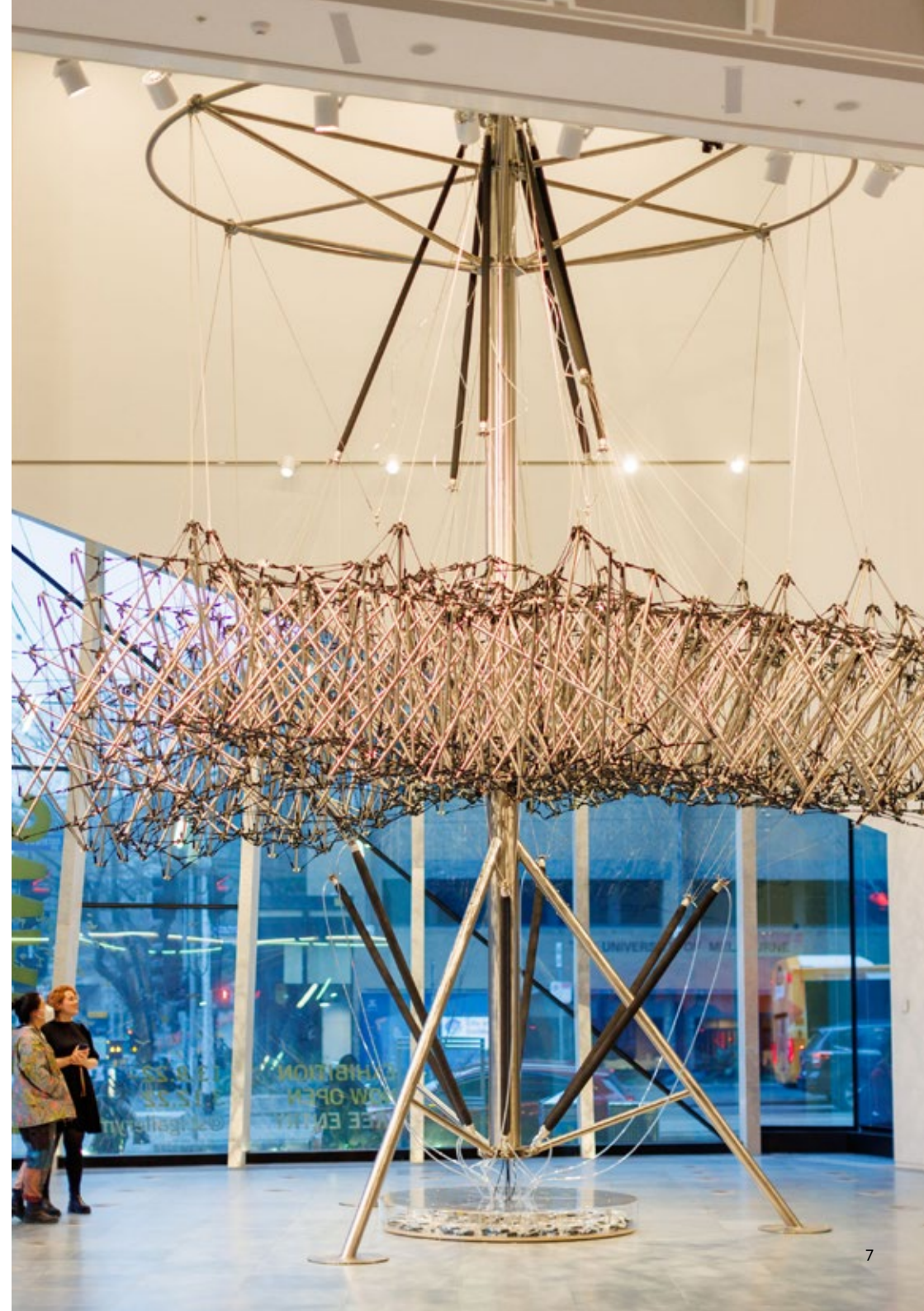
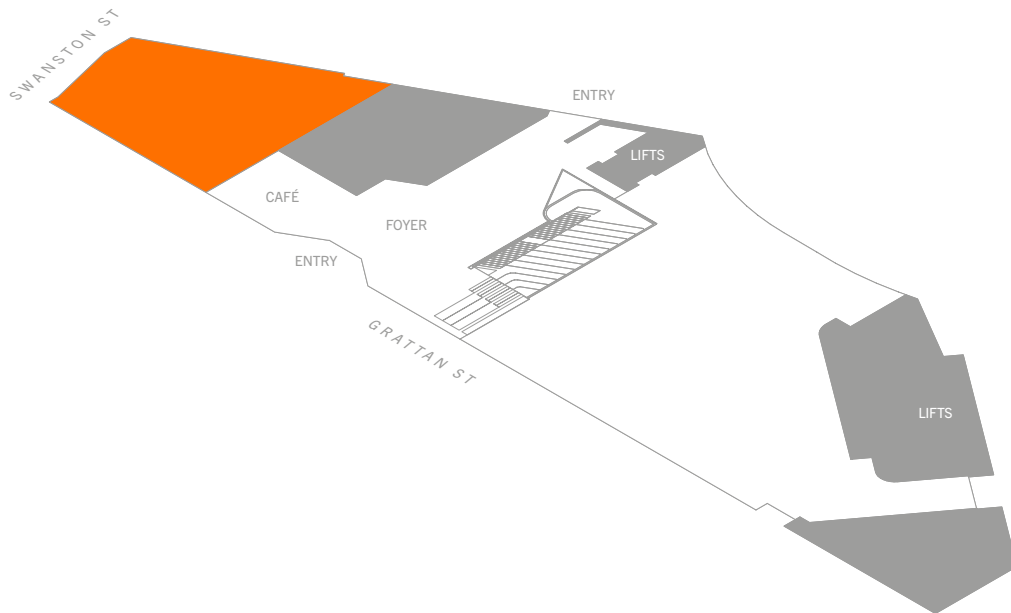
AVAILABILITY

Daytime: 8am–4pm

Evening: 6pm–12am

Image (right): Installation view of 'Anthropomorphic Machine' by STELARC, Dr Paul Loh, David Leggett, Psyche Hou, Quishi Zhou, Gabriele Marini, Dr Eric Schoof, Melbourne School of Design, School of Computing and Information Systems, LLDS Architects, Pelican Studios and Festo in Science Gallery Melbourne's SWARM

GROUND FLOOR





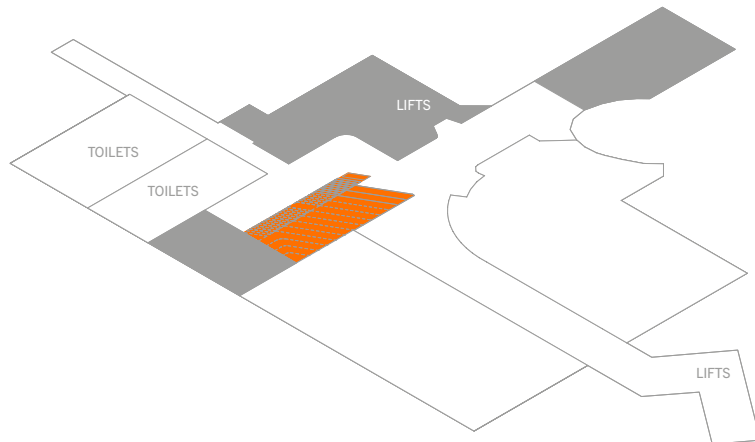
PACCAR THEATRE

The PACCAR Theatre is an open amphitheatre with an in-built projector and PA system, that can seat up to 80 guests. Nestled in between the entrance foyer and Eastern Gallery, the PACCAR Theatre is perfect for casual presentations, or as a breakout space to events in the Science Gallery Theatre.

CAPACITY
80 amphitheatre-style

AVAILABILITY
Daytime: 8am–4pm
Evening: 6pm–Late

BASEMENT





The PACCAR Theatre can be used as a standalone presentation space, or as a breakout area for events in the adjacent Science Gallery Theatre.

SCIENCE GALLERY THEATRE

Science Gallery Theatre is a purpose-built theatre space with state-of-the-art audio and visual capability, able to accommodate a variety of visual presentations, workshops, productions, hybrid meetings, awards presentations and performances. This space also features moveable curtains, numerous rigging points, staging equipment, and endless opportunity for added visual and lighting effects.

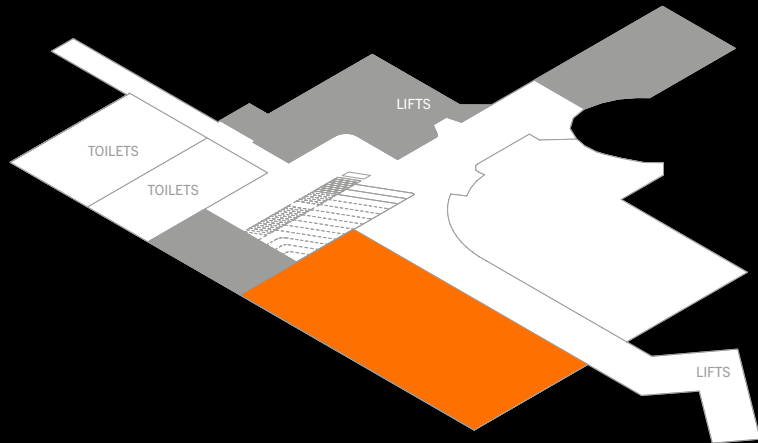
CAPACITY

Theatre: 180
Cocktail: 200
Dining: 130

AVAILABILITY

Daytime: 8am–4pm
Evening: 6pm–12am

BASEMENT





'Sacrifice Contemplating Time and Trust' by Robert Walton.
Photography by Trevor Mein.

STEM CENTRE OF EXCELLENCE

Science Gallery Melbourne has partnered with the Department of Education and Training to create the STEM Centre of Excellence; an educational facility that hosts thousands of students each year with programs that explore exhibition themes. With excellent audio visual teaching and learning resources, and with the ability to divide the room in half with each side equipped with teaching facilities, the STEM Centre is a perfect space for breakout areas and workshops.

CAPACITY

Cocktail: NA

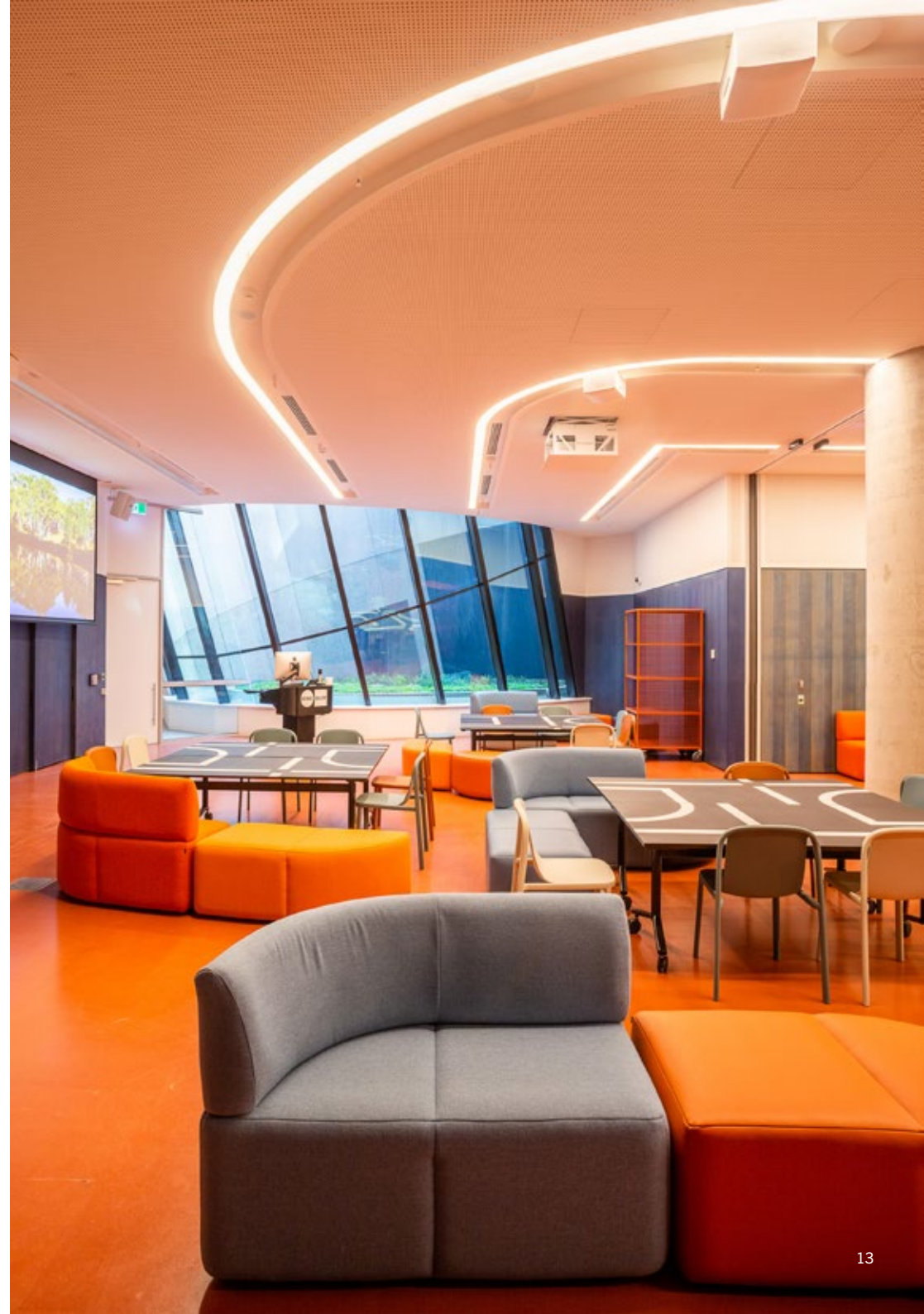
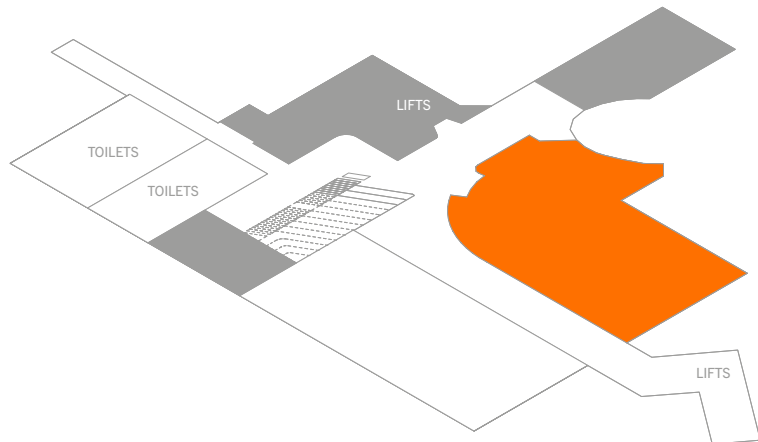
Dining: NA

Workshop: 64

AVAILABILITY

The STEM Centre of Excellence is available on request, outside school teaching periods, including on weekends and during school holidays.

BASEMENT



PRIVATE EXHIBITION VIEWING

Elevate your event by including an exhibition viewing alongside your booking, facilitated by our expert team of gallery mediators.



Installation view in Science Gallery Melbourne's
BREAK THE BINARIES

CURATORIAL TOURS

A bespoke tour with one of our experienced curators to delve into the artistic practice and themes of the exhibition. Recommended for smaller groups of 20 or under.



Installation view of 'Bugs against the binary' by Lauri Pavlovich (they/them) with input from Professor Mark Elgar, Zoe Walder and Brian Pavlovich in Science Gallery Melbourne's BREAK THE BINARIES (Photography: Alan Weedon, 2023)

CREATIVE PROGRAMING

With access to a wealth of creative talent, including DJs, dancers, musicians, and more, let us help curate entertainment alongside your event.



Artist: Themme Fatale
Image captured at Science Gallery's *Friday Night Social*

CATERING

Science Gallery Melbourne partners with Atlantic Group for all in-house and event catering. Whether it's all day conferencing, student lunches, or a fabulous cocktail party, Atlantic Group can provide the perfect menu to complement your event.

Atlantic Group
<https://atlanticgroup.com.au>

Get in touch with us at mc-events@unimelb.edu.au to arrange a site visit and get planning!

Installation view in Science Gallery Melbourne's SWARM



Take a look at some of our other fantastic venues available for your next event:

- [Buxton Contemporary](#)
- [Old Quad](#)
- [MPavilion Parkville](#)
- [Grainger Museum](#)
- [Ian Potter Museum of Art](#) (available 2024)

Installation view of 'Virus one million times' by Drew Berry and Justin Muir, WEHI in Science Gallery Melbourne's SWARM, (Photography: Alan Weedon, 2022)

SCIENCE GALLERY

melbourne.sciencegallery.com

Science Gallery Melbourne
114 Grattan St, Parkville, Victoria

SCIENCE GALLERY MELBOURNE IS PART OF THE GLOBAL SCIENCE GALLERY NETWORK PIONEERED BY [TRINITY COLLEGE DUBLIN](#)



THE UNIVERSITY OF
MELBOURNE